

# COLLIER PARK OF COMMERCE

PROFESSIONAL OFFICE



## FOR LEASE

3050 HORSESHOE DRIVE, NAPLES, FL 34104



## ON-SITE PROPERTY MANAGEMENT

### CONTACT

**DAVE WALLACE, CCIM, SIOR**  
**Senior Vice President**  
 239.659.1447 x218  
 dave.wallace@creconsultants.com

**DAVID WALLACE**  
**Senior Associate**  
 239.659.1447 x223  
 david.wallace@creconsultants.com

12140 Carissa Commerce Ct, Suite 102  
 Fort Myers, FL 33966  
 1100 Fifth Ave. S, Suite 404  
 Naples, FL 34102

BLDG	UNIT	SIZE (SF)	LEASE RATE (PSF)	MONTHLY BASE RENT	CAM (PSF)	MONTHLY CAM	MONTHLY TOTAL
B	218	2,500	\$19.00	\$3,958.33	\$7.40	\$1,541.67	\$5,500.00

**Collier Park of Commerce** is owned and managed

by the Adler Group, which owns and manages an extensive real estate portfolio of properties in the Southeast United States. Adler Group professionals possess a deep understanding of the CRE industry and are extremely responsive to their tenants' needs.

**LEASE RATE:** \$19.00 PSF NNN

**LOCATION:** Located just north of Radio Road, adjacent to the Naples Municipal Airport. This property provides tenants with a central location, excellent accessibility and good visibility, with many amenities in the immediate area.

**ZONING:** BP - Business Park District (Collier County)

The information contained herein was obtained from sources believed reliable. CRE Consultants makes no guarantees, warranties or representations as to the completeness or accuracy thereof, and is subject to errors, omissions, change of price or conditions prior to sale or lease, or withdrawal without notice. 09/22/25

# COLLIER PARK OF COMMERCE

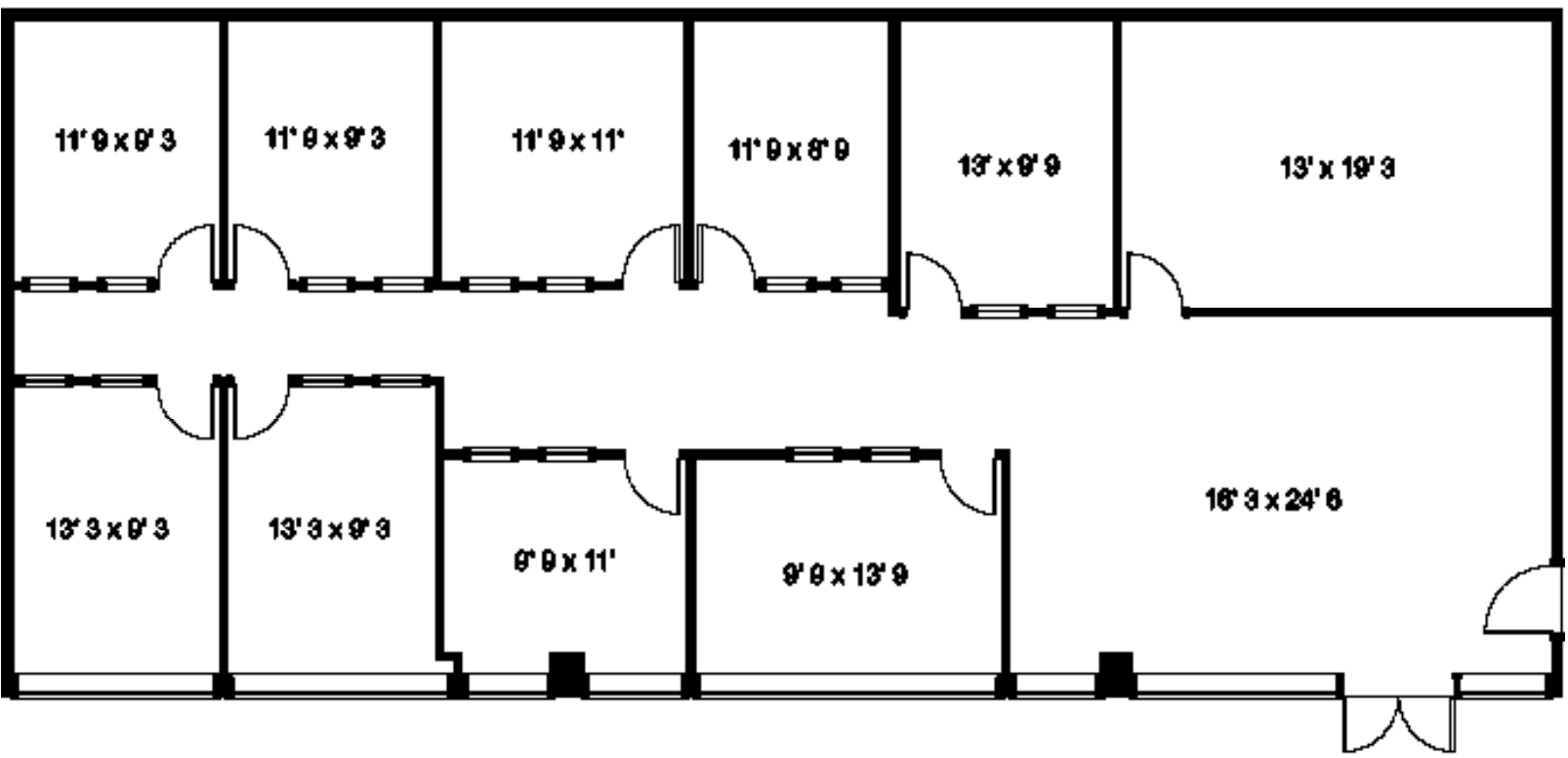
PROFESSIONAL OFFICE



## FOR LEASE

3050 HORSESHOE DRIVE, NAPLES, FL 34104  
BUILDING 3050-B

**UNIT 218**  
2,500± SF



**CONTACT**  
**DAVE WALLACE, CCIM, SIOR**  
Senior Vice President  
239.659.1447 x218  
dave.wallace@creconsultants.com

**DAVID WALLACE**  
Senior Associate  
239.659.1447 x223  
david.wallace@creconsultants.com

The information contained herein was obtained from sources believed reliable. CRE Consultants makes no guarantees, warranties or representations as to the completeness or accuracy thereof, and is subject to errors, omissions, change of price or conditions prior to sale or lease, or withdrawal without notice. 09/22/25

# COLLIER PARK OF COMMERCE

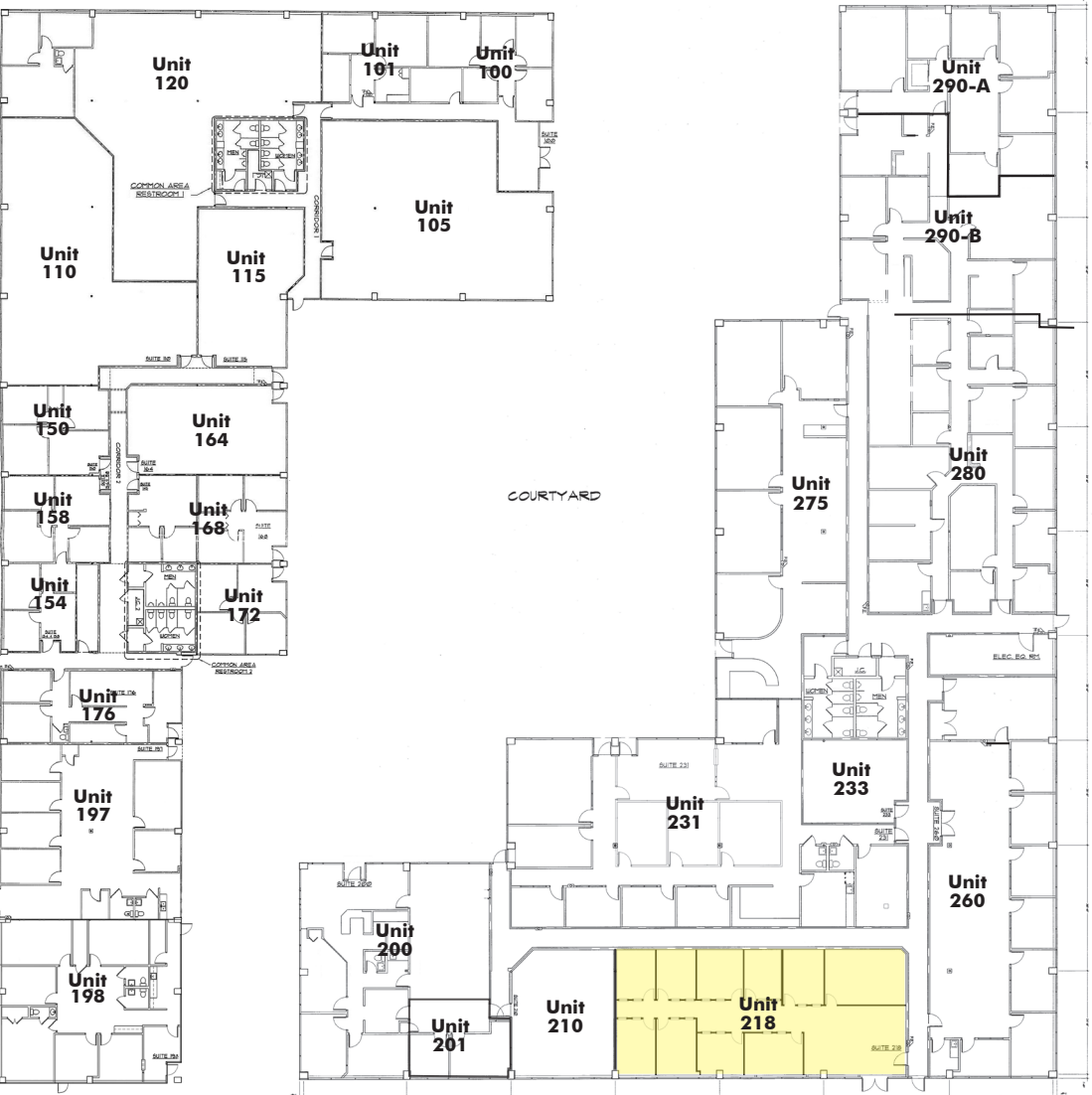
PROFESSIONAL OFFICE



## FOR LEASE

3050 HORSESHOE DRIVE, NAPLES, FL 34104

BUILDING 3050-A



BUILDING 3050-B

AVAILABLE



### HIGHLIGHTS

- Ample parking
- On-site property management
- Natural light and courtyard views
- Common restrooms in close proximity

### CONTACT

**DAVE WALLACE, CCIM, SIOR**  
Senior Vice President

239.659.1447 x218

dave.wallace@creconsultants.com

**DAVID WALLACE**  
Senior Associate

239.659.1447 x223

david.wallace@creconsultants.com

The information contained herein was obtained from sources believed reliable. CRE Consultants makes no guarantees, warranties or representations as to the completeness or accuracy thereof, and is subject to errors, omissions, change of price or conditions prior to sale or lease, or withdrawal without notice.

# COLLIER PARK OF COMMERCE

PROFESSIONAL OFFICE



## FOR LEASE

3050 HORSESHOE DRIVE, NAPLES, FL 34104



**SYNERGISTIC COMPANIES IN IMMEDIATE TRADE AREA**

**COLLIER PARK OF COMMERCE**  
 Join this thriving business park owned and managed by the Adler Group, where 190,000± SF of office and industrial space is nearly fully occupied. Secure your spot in this highly sought-after location and benefit from the exceptional management and vibrant community that the Adler Group provides.



**CONTACT**  
**DAVE WALLACE, CCIM, SIOR**  
 Senior Vice President  
 239.659.1447 x218  
 dave.wallace@creconsultants.com

**DAVID WALLACE**  
 Senior Associate  
 239.659.1447 x223  
 david.wallace@creconsultants.com

The information contained herein was obtained from sources believed reliable. CRE Consultants makes no guarantees, warranties or representations as to the completeness or accuracy thereof, and is subject to errors, omissions, change of price or conditions prior to sale or lease, or withdrawal without notice.

# COLLIER PARK OF COMMERCE

PROFESSIONAL OFFICE



Commercial Real Estate Consultants, LLC

CRECONSULTANTS.COM

## FOR LEASE

3050 HORSESHOE DRIVE, NAPLES, FL 34104

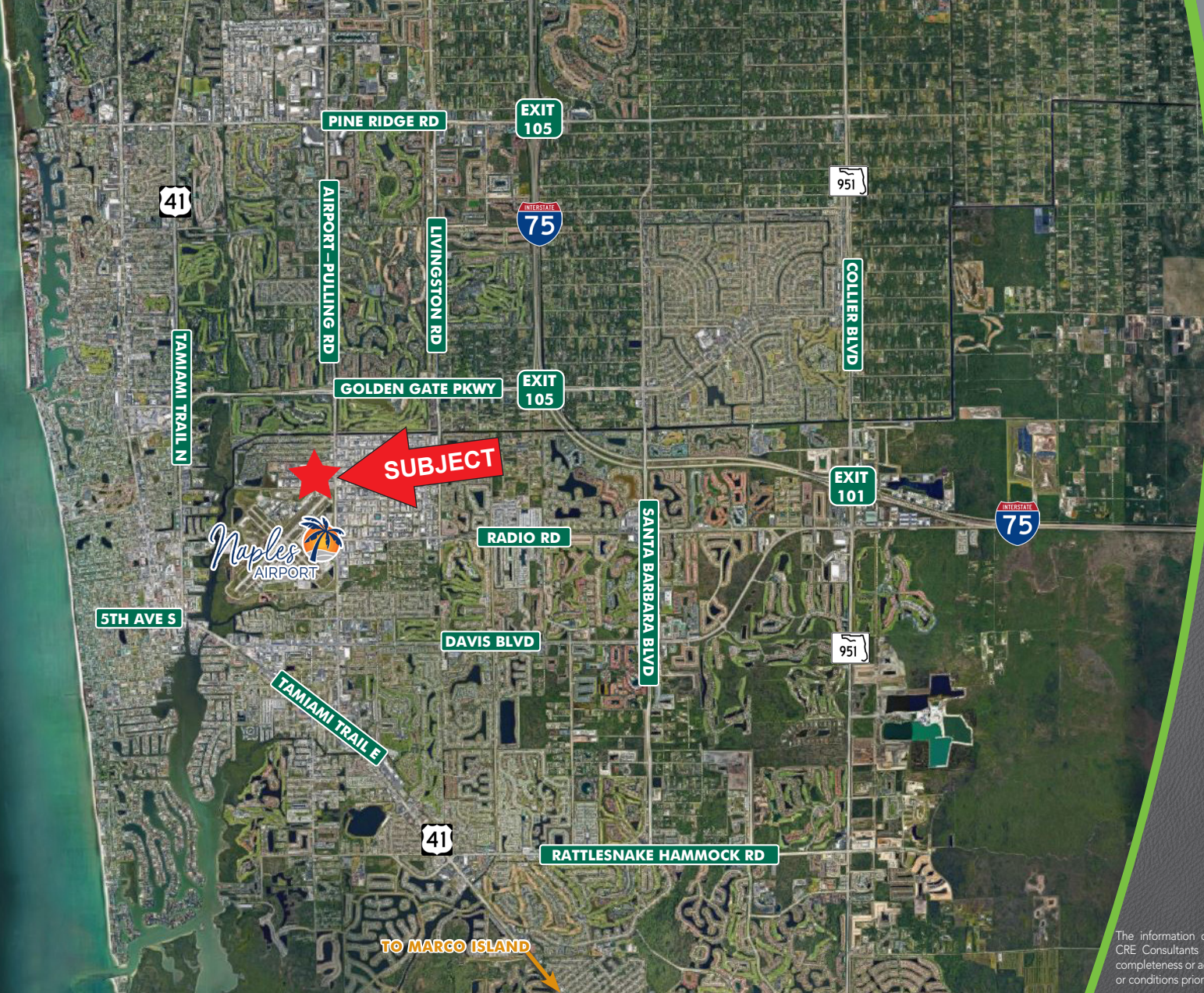
### DISTANCES

- US 41  
2.6± Miles
- I-75  
3.1± Miles
- Lee County  
12± Miles
- Marco Island  
18.2± Miles

### CONTACT

**DAVE WALLACE, CCIM, SIOR**  
 Senior Vice President  
 239.659.1447 x218  
 dave.wallace@creconsultants.com

**DAVID WALLACE**  
 Senior Associate  
 239.659.1447 x223  
 david.wallace@creconsultants.com



gulf of  
mexico

TO MARCO ISLAND

The information contained herein was obtained from sources believed reliable. CRE Consultants makes no guarantees, warranties or representations as to the completeness or accuracy thereof, and is subject to errors, omissions, change of price or conditions prior to sale or lease, or withdrawal without notice.